

# Level Dex<sup>®</sup>



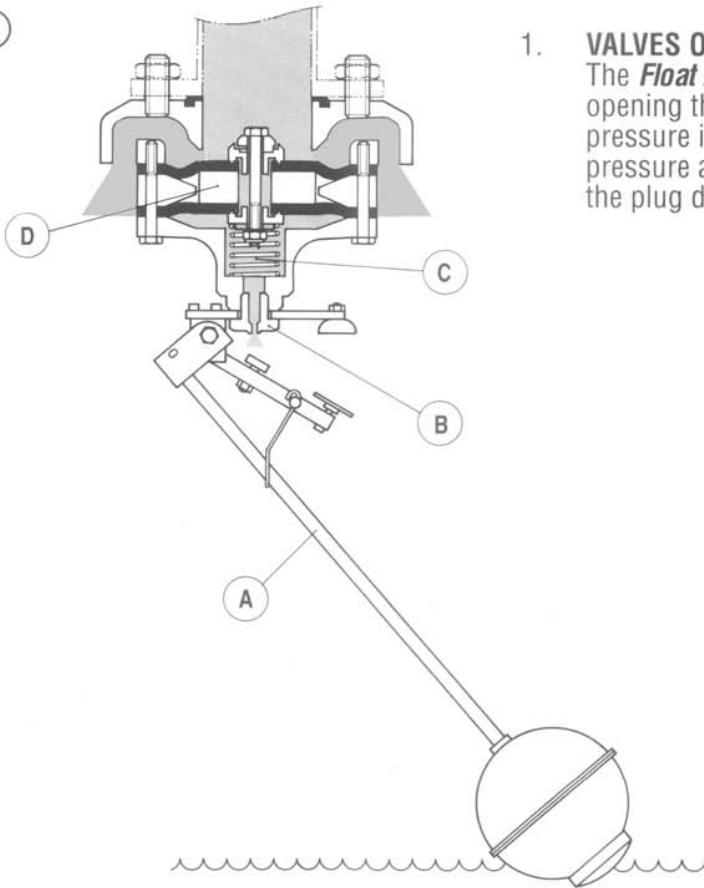
## LEVEL CONTROL VALVES



**LevelDex® - OPERATING PRINCIPLE**

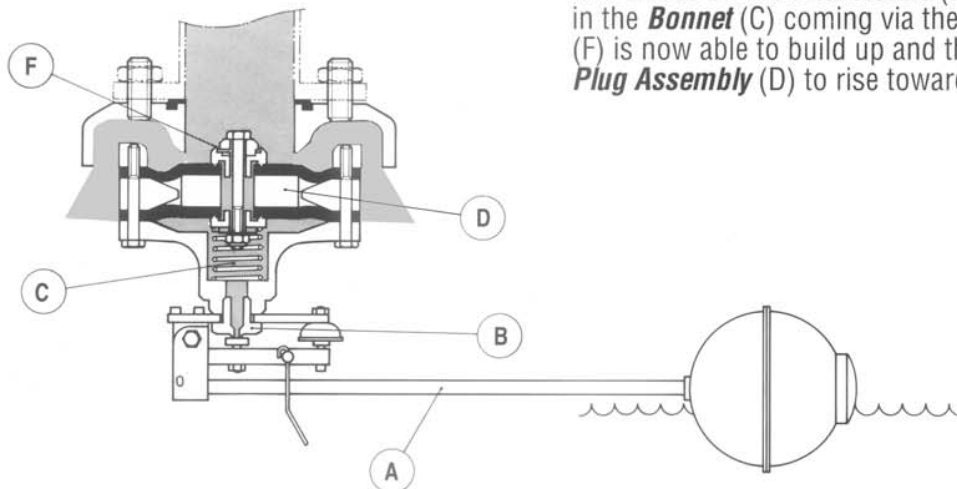
**NOTE:** **LevelDex®** is a hydraulic, differential area control valve that uses upstream pressure to function. The Pilot exerts no mechanical force on the valve.

①



1. **VALVES OPENS:**  
The **Float Arm (A)** follows the water surface down opening the **Pilot Nozzle (B)**, allowing the pressure in the **Bonnet (C)** to drop, allowing the pressure above the **Plug Assembly (D)** to force the plug down and away from the seat.

③

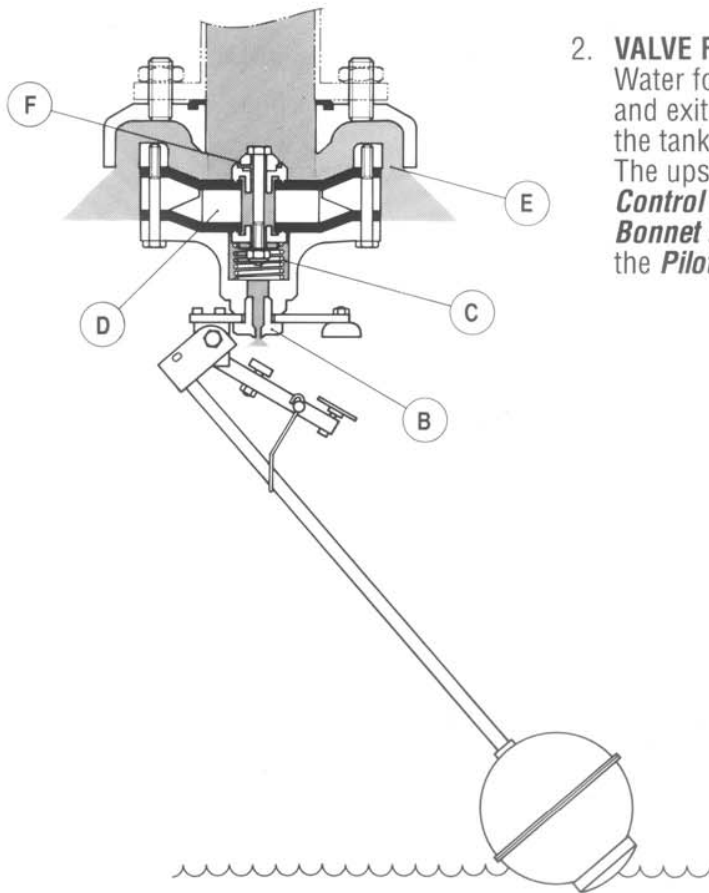


3. **VALVE BEGINS TO CLOSE:**  
The **Float Arm (A)** follows the rising water surface and closes off the **Pilot Nozzle (B)**. The pressure in the **Bonnet (C)** coming via the **Control Orifice (F)** is now able to build up and this forces the **Plug Assembly (D)** to rise toward the valve seat.

**LevelDex® - OPERATING PRINCIPLE**

**NOTE:** **Leveldex®** is a hydraulic, differential area control valve that uses upstream pressure to function. The Pilot exerts no mechanical force on the valve.

②

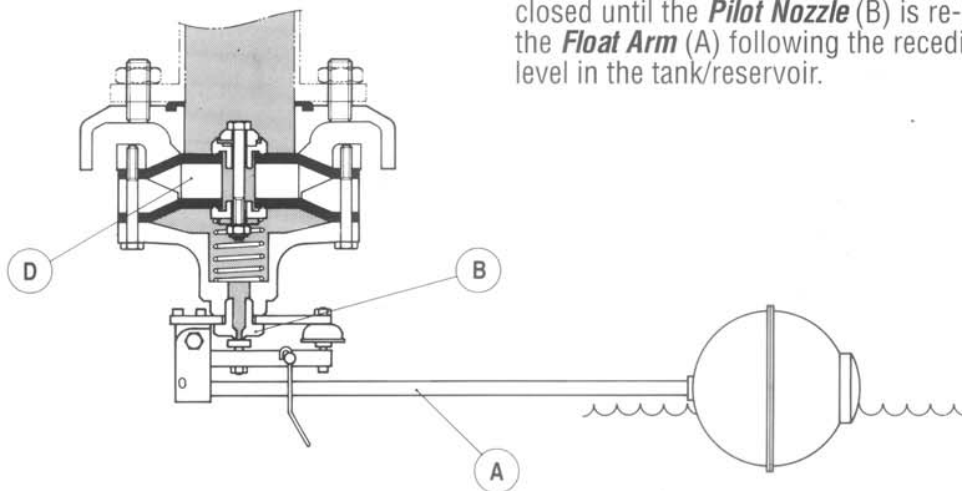


**2. VALVE FULLY OPEN:**

Water forces the **Plug Assembly (D)** down and exits via the **Annular Outlets (E)** into the tank/reservoir.

The upstream pressure goes into the **Control Orifice (F)** and down into the **Bonnet area (C)** and is able to exit out of the **Pilot Nozzle (B)** into the tank/reservoir.

④



**4. VALVE FULLY CLOSED:**

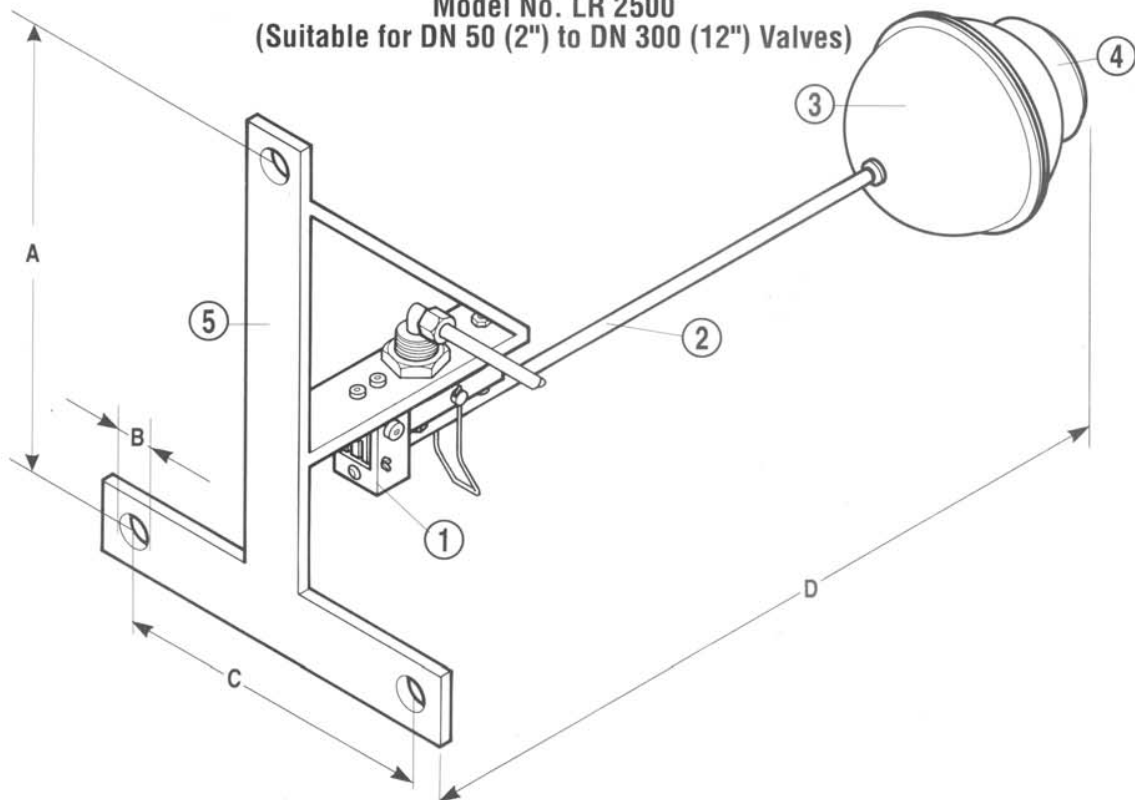
The **Plug Assembly (D)** is forced up against the valve seat and the valve is closed and will remain closed until the **Pilot Nozzle (B)** is re-opened by the **Float Arm (A)** following the receding water level in the tank/reservoir.



**LevelDex® - TECHNICAL DATA**

**REMOTE MOUNTED TWO LEVEL MAGNETIC LATCH PILOT WITH SHORT DEAD BAND**

**Model No. LR 2500**  
 (Suitable for DN 50 (2") to DN 300 (12") Valves)



- 1. Main Body: Gunmetal with Stainless Steel Trim
- 2. Float Arm: Stainless Steel 304
- 3. Float: ABS Plastic
- 4. Float Weight: Cast Iron - Epoxy Powder Coated
- 5. Bracket: Galvanized Mild Steel
- Attachment: 1/4" Tube to Valve Bonnet
- Weight:: 4 kg. (8,8 lbs)

Supplied as standard on DN 200 (8") to DN 300 (12") **LevelDex®** Valves.

A		B 3 x Ø		C		D	
mm	inches	mm	inches	mm	inches	mm	inches
292	11 1/2	Ø 17,5	Ø 11/16	156	6 5/32	930	36 5/8

**NOTE:**

Supplied as standard on all DN200 (8") to DN300 (12") **LevelDex®** valves but can be used on the whole range.